



ITEM

75400-707

Capacity	0.26 cu.ft. (7.4 liters)
Interior Dimensions (W x D x H)	12.5" x 6.1" x 6.0" 318 x 154 x 152 mm
Exterior Dimensions (W x D x H)	16.1" x 22.1" x 12.1" 408 x 562 x 308 mm
Dry Weight*	46.6 lb (21.2 kg)
Net Weight**	69.0 lb (31.3 kg)
Shipping Weight	96.0 lb (44.0 kg)
Interior Construction	Aluminum
Exterior Construction	300 Stainless Steel/CR
Wall Clearance, Each Side	4" (102 mm)
Wall Clearance, Rear	4" (102 mm)
Tank Size	7 liters
Tank Fill Capacity	5 liters

ELECTRICAL

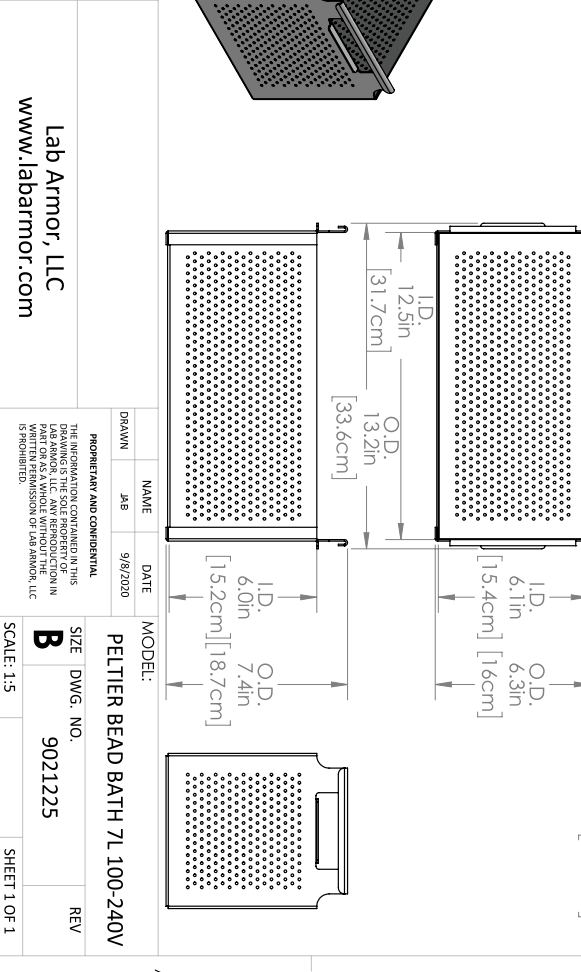
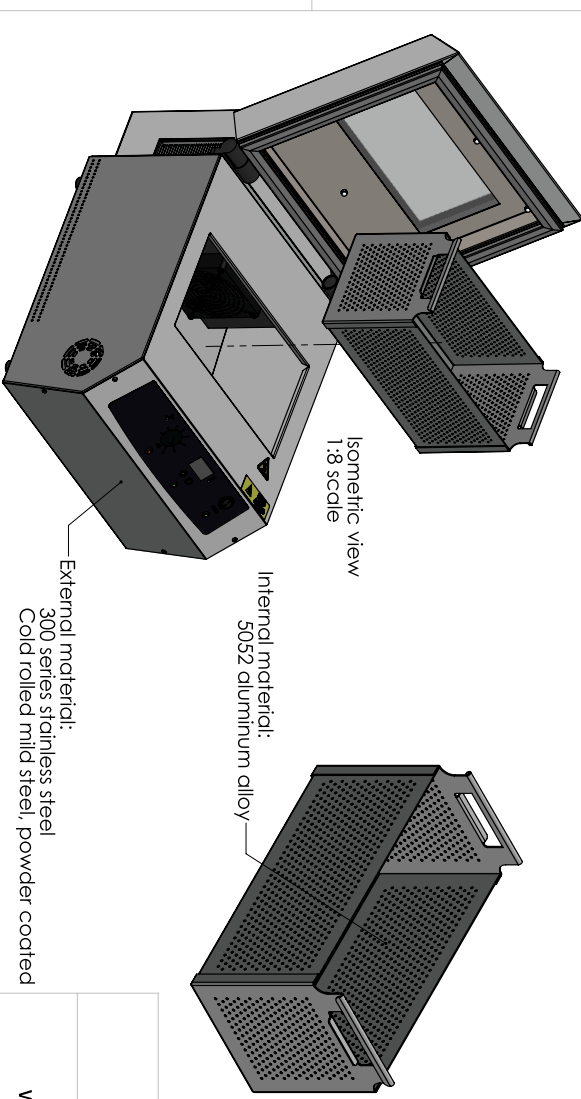
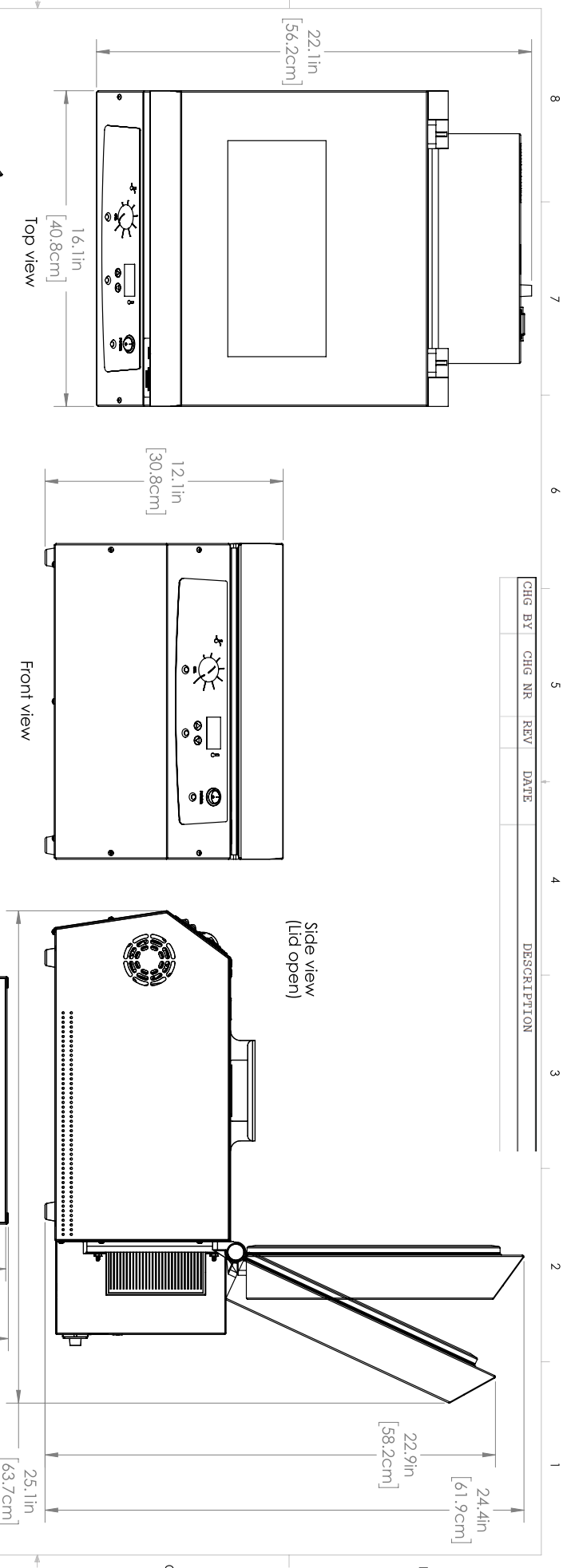
Electrical Supply /Hz, AC, 1Ø	50/60 Hz, 100-240 AC, 275 Watts
Plug Supplied	NEMA5-15P, EU1-16P

TEMPERATURE SPECIFICATIONS

Temperature Range	2°C to 70°C
Temperature Uniformity	±0.4°C at 4°C ±0.5°C at 37°C ±1.5°C at 70°C
Temperature Stability - At 37°C	0.1

*Bath empty with no beads loaded.
**Bath filled with beads.

CHG BY	CHG NR	REV	DATE	DESCRIPTION



Lab Armor, LLC www.labarmor.com		MODEL: PELTIER BEAD BATH 7L 100-240V	
<small>PROPRIETARY AND CONFIDENTIAL</small> <small>THE INFORMATION CONTAINED IN THIS DRAWING IS THE SOLE PROPERTY OF LAB ARMOR, LLC. NO PART OF THIS DRAWING IS TO BE REPRODUCED OR TRANSMITTED IN ANY FORM OR BY ANY MEANS, ELECTRONIC OR MECHANICAL, INCLUDING PHOTOCOPYING, RECORDING, OR BY ANY INFORMATION STORAGE AND RETRIEVAL SYSTEM, WITHOUT THE WRITTEN PERMISSION OF LAB ARMOR, LLC (575) 885-8151</small>	<small>DRAWN</small> <small>JAB</small>	<small>DATE</small> <small>9/8/2020</small>	<small>SCALE:</small> <small>1:5</small>
<small>SIZE</small> B	<small>DWG. NO.</small> 9021225	<small>REV</small> 	<small>SHEET 1 OF 1</small>