

FILTRATION CENTRIFUGE SIEVA-3



Description

- Maintenance free induction drive
- Microprocessor controlled speed regulation
- Speed pre-selection from 200 rpm up to 10,000 rpm in increments of 10 rpm
- Running time pre-selection from 10 sec. to 99 h 59 min. in increments of 10 sec. or continuous run
- Imbalance switch-off
- Automatic lid-lock
- Transparent centrifuge lid for visual control
- Stainless steel chamber and housing parts
- Quick key for short runs
- CE-conformity
- Manufactured according to international safety regulations, i.e IEC 61010 and 61010-2

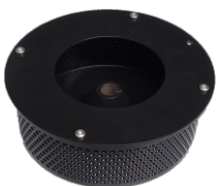
Centrifugal Baskets 500 ml



Order No.: Z600-S3-P
perforated



Order No.: Z600-S3-NP
not perforated



Order No.: Z600-S3-PC
perforated
incl. special coating "SafeCode 778"

Filter material PP DWL

- **Order No.** Z600-S3-F7u: **pore size 7μ**
- **Order No.** Z600-S3-F20u: **pore size 20μ**
- **Order No.** Z600-S3-F30u : **pore size 30μ**
- **Order No.** Z600-S3-F50u : **pore size 50μ**



Package unit with 10 filter each!



Rotor incl. filter material

Technical Data

- Speed max.: 10,000 rpm
- RCF max.: 7,825 xg
- Acceleration time: 9 sec.
- Deceleration time: 12 sec.
- Current supply: 230 V / 120 V
- Power supply: 0.85 KW

Dimensions

- W x H x D: 38 x 32 x 50 cm
- Weight: approx. 37 kg (Unit V01/V02)

- Weight: approx. 43 kg (Unit V03/V04/V05)

SIEVA-3 Units

- **Order No.:** Z600-S3 - **120 V / 50-60 Hz**
- **Order No.:** Z600-S3-E - **230 V / 50-60 Hz**

- **Order No.:** Z600-S3-TC - **120 V / 50-60 Hz for external temperature equalization**
- **Order No.:** Z600-S3-TC-E - **230 V / 50-60 Hz for external temperature equalization**

- **Order No.:** Z600-S3-SC - **120 V / 50-60 Hz for external temperature equalization incl. special coating "SafeCoat 778"**
incl. USB-package Z600-S3-USB



- Connection for external temperature equalization

MidSci™

Midwest Scientific
280 Vance Rd
St. Louis, MO 63088
PH: 800-227-9997
Fax: 636-225-9998
E-mail: leads@midsci.com
Web: www.midsci.com