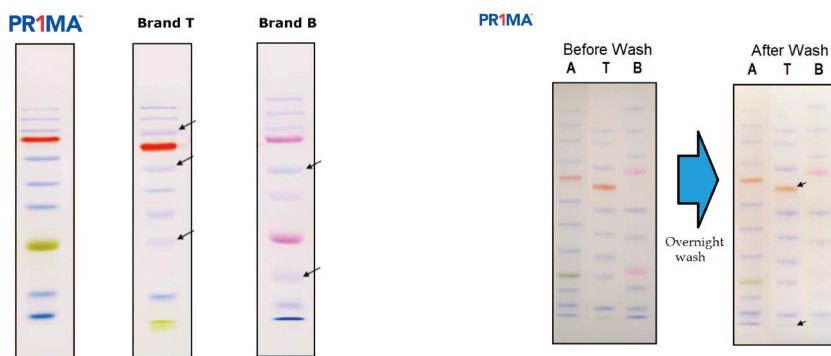


## PR1MA™ Protein Markers

- Available in blue and tri-color.
- Available 10-13 bands.
- Available in 9-180 kDa or 9-245 kDa.
- Loading Volume
  - 3 µL or 5 µL per loading for clear visualization during electrophoresis on a 15-well or 10-well mini-gel.
  - 1.5~2.5 µL per well for general Western blotting transfer.
- Qty 2 x 250 µL

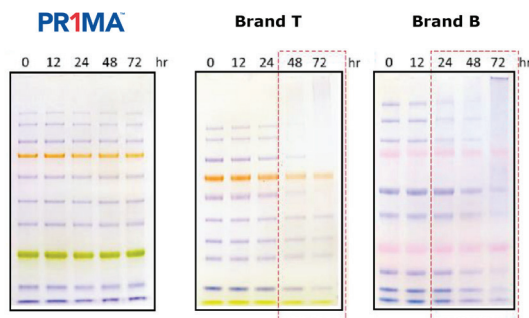
## PR1MA™ vs the competitors



In customer evaluation, the PR1MA™ Protein Markers exhibit significantly sharper bands than popular competitors' markers.

Customer testing shows that PR1MA™ Protein Markers (A), perform better than competitor brands (T and B) with less fading of bands after overnight washing.

Bands were transferred to nitrocellulose membrane and washed with TBS containing 0.2% Tween 20 overnight.



Temperature stability testing shows that PR1MA™ Protein Markers exhibit significantly better performance (sharper bands, minimal deterioration) after storage at 55°C for 3 days.

CATALOG #	COLOR	BANDS	RANGE	QTY
PR5010-BL	Blue	10	9-180 kDa	2 x 250 µL
PR5010-TC	Tri-Color	10	9-180 kDa	2 x 250 µL
PR5011-BL	Blue	11	9-180 kDa	2 x 250 µL
PR5012-TC	Tri-Color	12	9-245 kDa	2 x 250 µL
PR5013-TC	Tri-Color	13	9-180 kDa	2 x 250 µL